

SERIES 18

.438" Double Row Phenolic Barrier Terminal Strip

Description

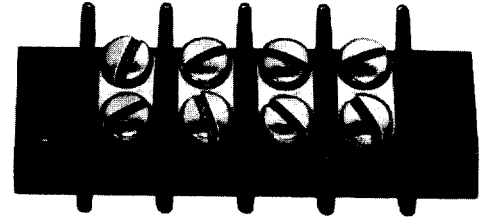
The series 18 phenolic double row terminal strip is one of our most versatile products. The terminal block is offered in feed-thru and open bottom designs and is available in a variety of terminal and screw styles.

The 150° C temperature rating and robust terminal design make the series 18 the choice for your most demanding applications.

Made in the USA, all Beau terminal blocks embody the highest quality standards in the industry-using the finest materials and world class manufacturing processes. They meet or exceed all applicable industry standards.

Features

- **Snap-On covers** meet UL touch safe requirements. The low-cost optional covers are an economical way to prevent accidental shock.
- **High temperature phenolic insulator** out performs many thermoplastic compounds.
- **Wide variety of options.** Our broad range of screw, terminal, hardware and mounting options allows us to save you assembly costs and improve interconnect performance.



PRODUCT RATINGS

#6-32 BINDING HEAD SCREW

UL	Class B	15 Amps @ 300 V 14 AWG
	Class C	10 Amps @ 300 V 14 AWG
CSA	Class B	20 Amps @ 300 V 14 AWG
	Class C	20 Amps @ 300 V 14 AWG

#6-32 WIRE CLAMP SCREW

UL	Class B	20 Amps @ 300 V 12 AWG
	Class C	10 Amps @ 300 V 12 AWG
CSA	Class B	20 Amps @ 300 V 12 AWG
	Class C	20 Amps @ 300 V 12 AWG

APPROVALS

UL	File No. E48521
	Guide No. XCFR2
CSA	File No. 025562

TECHNICAL SPECIFICATIONS

ELECTRICAL

DWV	7500 VDC
IR	>5000 Megohms

MECHANICAL

Tightening torque	12 in.-lbs.
Maximum torque	13 in.-lbs.
Wire strip length	5/16"
Wire range	12 to 22 AWG

ENVIRONMENTAL

Continuous Use Temp	
RTI electrical	150°C
RTI mechanical w/o impact	150°C

MATERIALS

Insulator	General purpose phenolic, UL94VO, black
Terminal	Brass, nickel plate
Screws	#6-32, phillips/slotted, steel, zinc chromate plate

OPTIONS

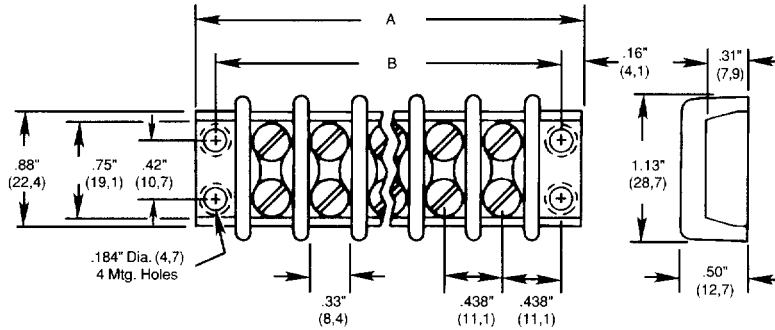
-45	Slotted screw
-45-56	Stainless steel screw, slotted
-47	Screws up, wire ready
-49	Brass, phillips/slotted screw
-50	Clamp washer, phillips/slotted screw
-58	No screws, barrier only
-59	Screws supplied unassembled
-60	One row screws supplied unassembled
-61	One row screws not supplied
-66	Bonded marker strip
-C	No mounting ends

HOW TO ORDER

1	8	X	X	X	X	X
SERIES	TERMINAL STYLE	NO. OF POLES	OPTIONS			
	012	2 to 30	(Dash #s above and opposite page)			
	356					
	7					

*Consult factory for combinations of screw options.

SERIES 18



No. of Circuits	A		B	
	in.	mm	in.	mm
2	1.63	41,4	1.31	33,4
3	2.06	52,3	1.75	44,5
4	2.50	63,5	2.19	55,6
5	2.94	74,7	2.63	66,7
6	3.38	85,9	3.06	77,8
7	3.81	96,8	3.50	88,9
8	4.25	108	3.94	100
9	4.69	119	4.38	111
10	5.13	130	4.81	122
11	5.56	141	5.25	133
12	6.00	152	5.69	144
13	6.44	164	6.13	156
14	6.88	175	6.56	167
15	7.31	186	7.00	178
16	7.75	197	7.44	189
17	8.19	208	7.88	200
18	8.63	219	8.31	211
19	9.06	230	8.75	222
20	9.50	241	9.19	233
21	9.94	252	9.63	244
22	10.38	264	10.06	256
23	10.81	275	10.50	267
24	11.25	286	10.94	278
25	11.69	297	11.38	289
26	12.13	308	11.81	300
27	12.56	319	12.25	311
28	13.00	330	12.69	322
29	13.44	341	13.13	333
30	13.88	353	13.56	345

TERMINAL STYLES

STYLE 0
Screw Terminal

Style 1
One Sided Solder

P/N 181

Style 2
Two Sided Solder

P/N 182

STYLE 3
Short Solder

P/N 183

STYLE 5
Long Solder

P/N 185

STYLE 6
Long PC

P/N 186

STYLE 7
Wire Wrap

P/N 187